

Thank you for purchasing this set MAMBA CLIPLESS PEDALS.

Please read the instructions thoroughly before attempting to install this item.
Proper installation is required for compliance with FUNN's warranty policy.

TOOLS REQUIRED

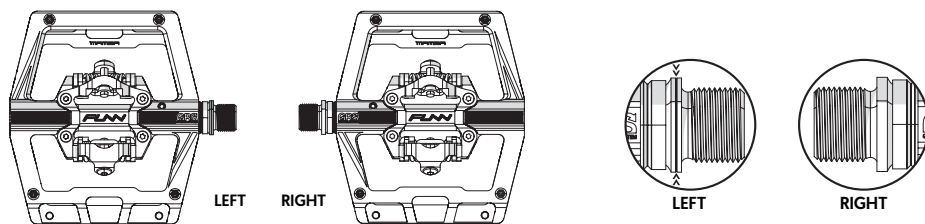
- Hex key 2mm
- Hex key 3mm
- Hex key 8mm
- Socket wrench 4mm

CONTENTS

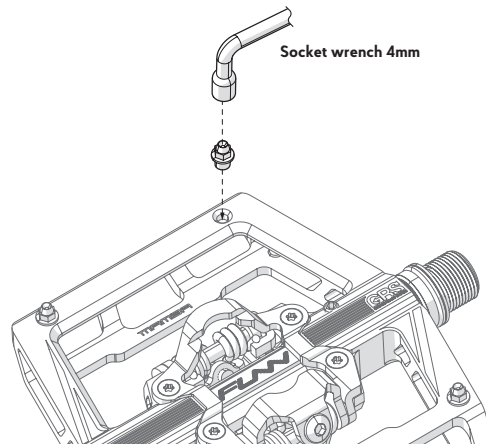
- | | | | | | |
|-----------------|-------|-----------------------|---------------------|-------|------|
| · Pedals | ----- | 1 SET | · Socket wrench 4mm | ----- | 1 PC |
| · Traction pins | ----- | 16 PCS (Double-sided) | · Hex key 2mm | ----- | 1 PC |
| | | 8 PCS (Single-sided) | | | |
| · Cleat kit | ----- | 1 SET | | | |

PEDAL INSTALLATION

1. Begin by identifying the left and right pedals. The left side pedal has a single indented line surrounding the spindle.

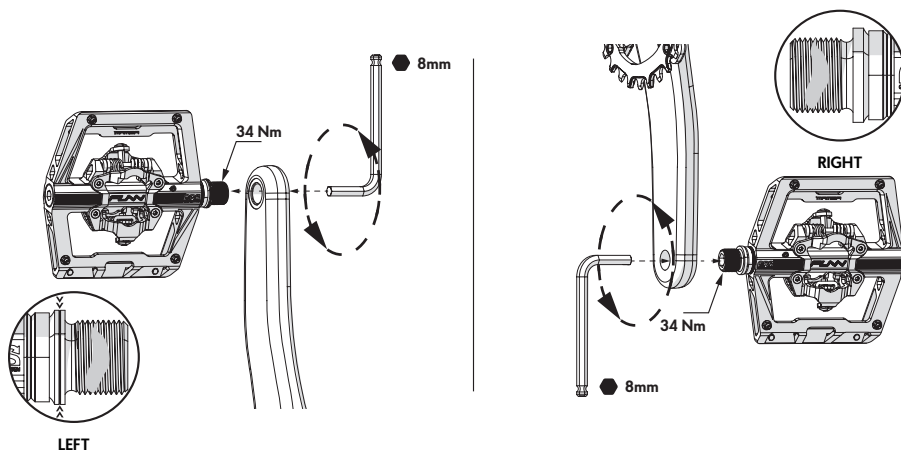


2. Install the traction pins with the 4mm socket wrench.



2. Lightly lubricate the axle threads with anti-size grease before installing to the crankset.
3. Thread the axle into the crank hole with your fingers. Please follow the illustrated directions for tightening the left and right pedals.

4. Insert a 8mm hex key to further tighten the screw to 34Nm (300 lb-in) torque and avoid excessive force.

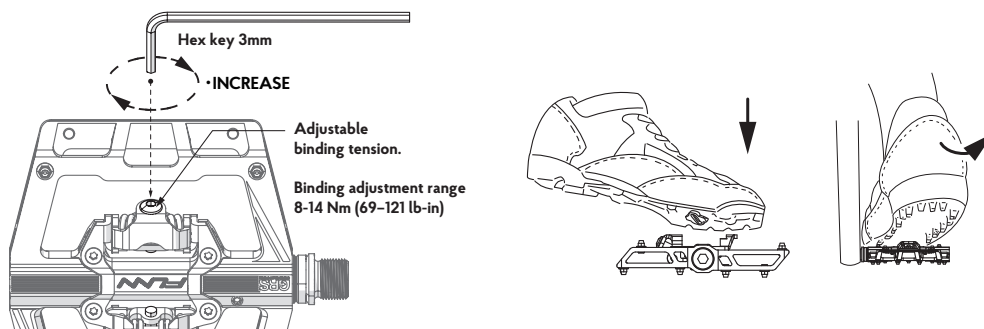


BINDING ADJUSTMENT

The tension adjuster is located on the rear binding. To adjust binding tension, use a 3 mm hex key for turning the tension adjuster.

1. Increase tension in a clockwise direction
(+) for a more secure pedal binding, but more difficult to engage and disengage.
2. Decrease tension in a counter-clockwise direction
(-) for a less secure pedal binding, but easier to engage and disengage.

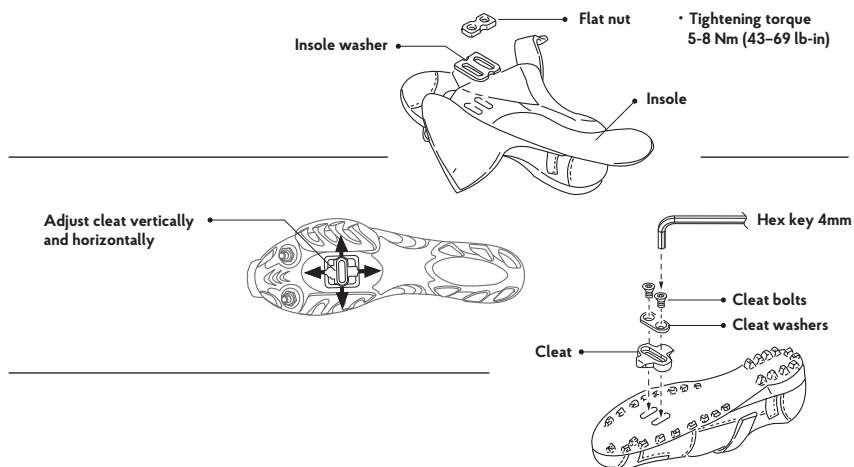
Engage cleated shoes in pedals by aligning the cleat between front and rear bindings while pushing down. Disengage by twisting heel outwards (away from bicycle). Cleat will also be released by twisting heel inwards if necessary.



ATTACH CLEATS TO CYCLING SHOES

Left and right cleats are identical.

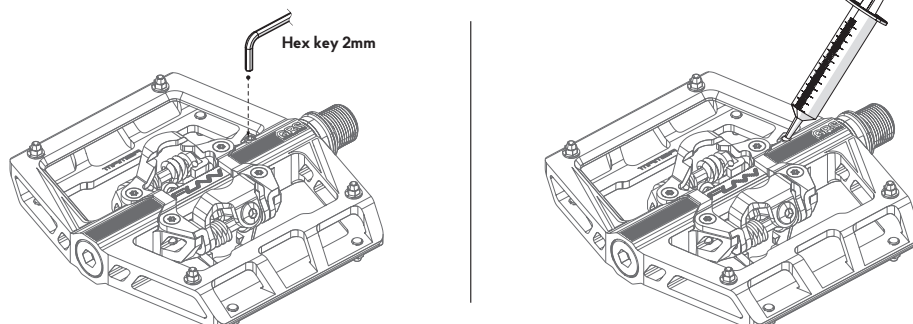
1. Lightly lubricate the cleat bolt threads with grease.
2. Use the 4 mm hex key to attach cleat bolts and the cleat washers loosely onto the shoe soles. The lateral center line of the cleat should be aligned with the center of the ball of the shoe sole. Adjust vertically via slots in shoe sole. Adjust horizontally via the play between the cleat washer and cleat.
3. Tighten the cleat to 5-8 Nm (44-70 lb-in) and avoid excessive force. Cleat position can be fine-tuned to preference after trial rides. It may take several rides to find your optimum cleat set-up.



GREASE RENEW SYSTEM

MAMBA CLIPLESS PEDALS features the GRS system to easily lubricate the bushing.

1. Use 2mm hex key to remove the GRS bolt.
2. Lubricate the bushing with a syringe and wipe off the excessive oil.
3. Tighten the bolt back on to seal the GRS port.
4. The GRS is only for light lubrication once in a while, yet we advise a full rebuild every 6 months.





**MAMBA
PEDAL**



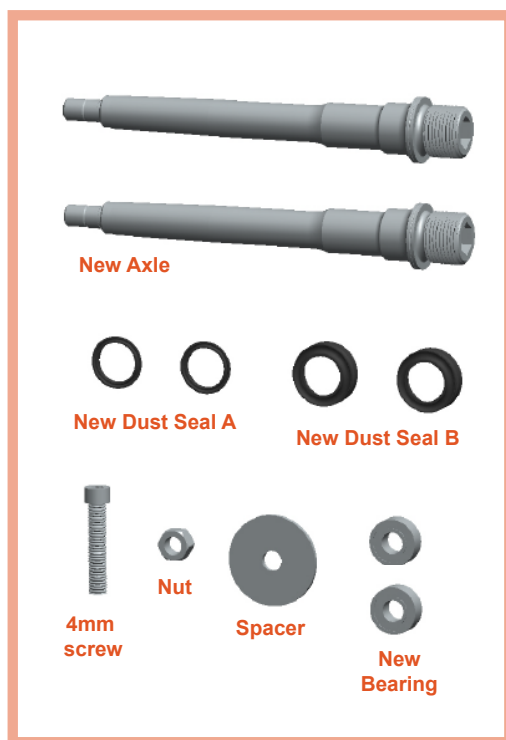
Bearing / Axle Replacement

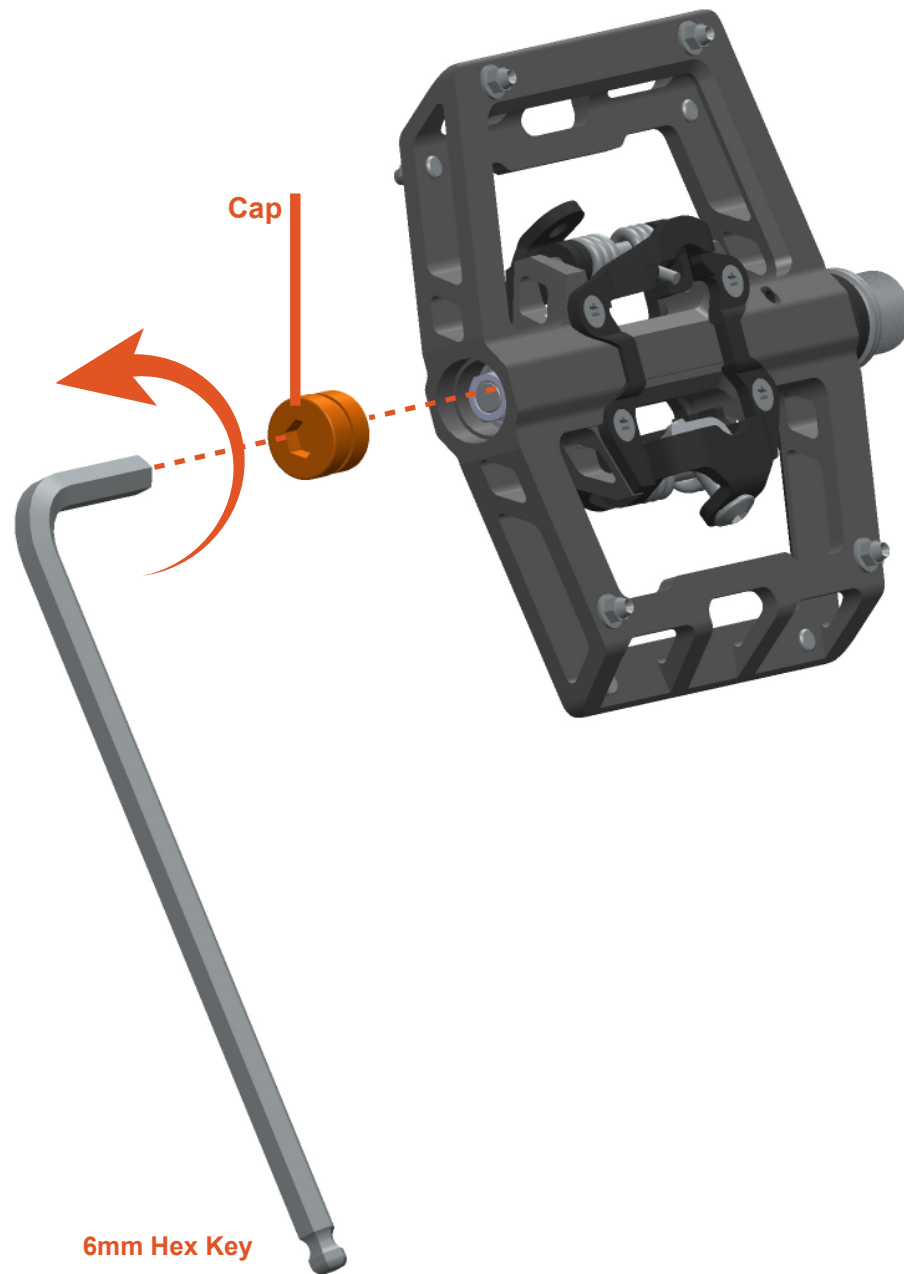
(Disassembly)



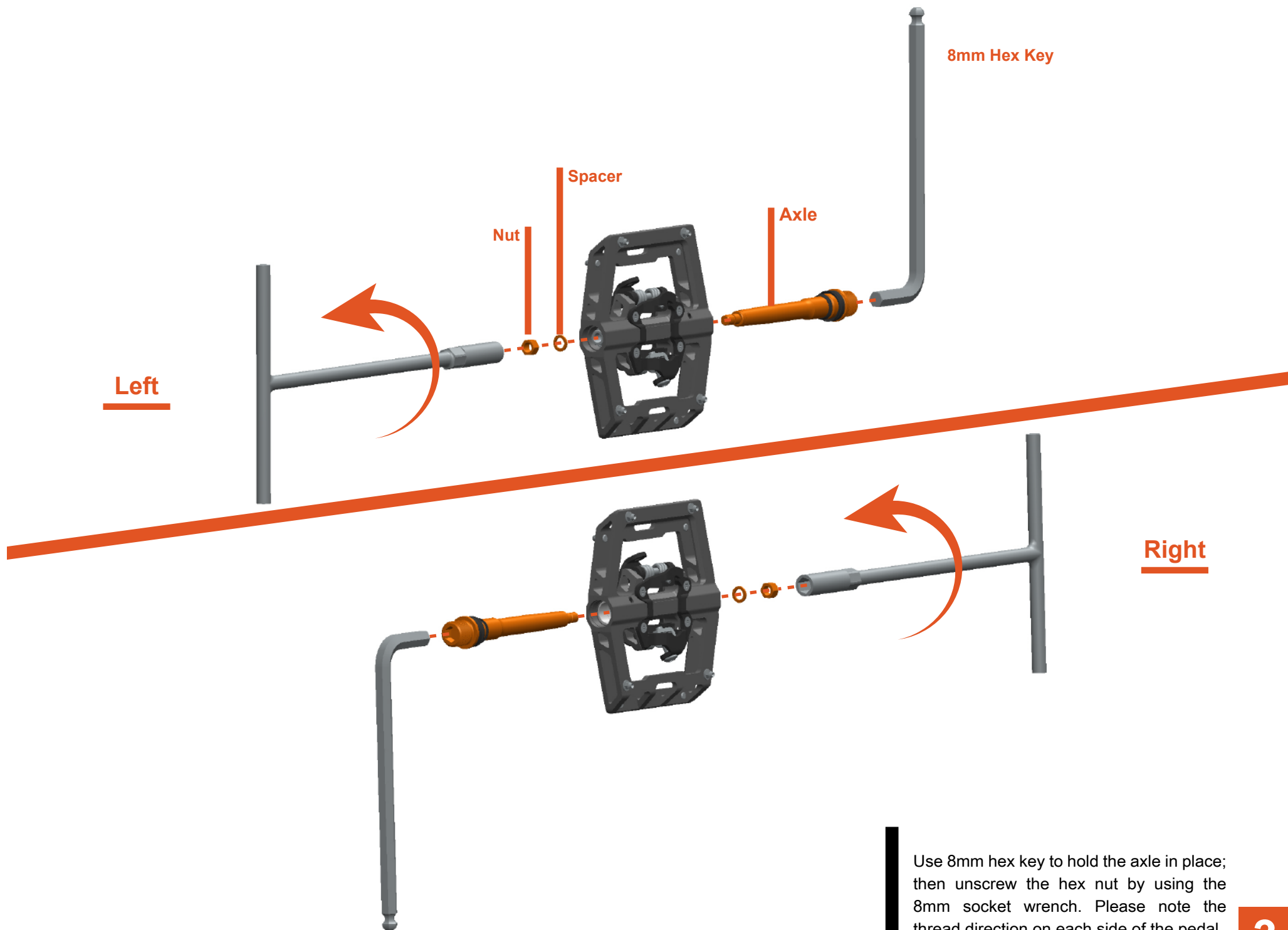
1. Use good quality tools to avoid stripping screw sockets.
2. When servicing your pedals, work on one side at a time to prevent parts from mixing up.
3. Reverse threads are indicated by drawings from both sides of the pedal. Please pay special attention when working on these parts.

Axle Kit

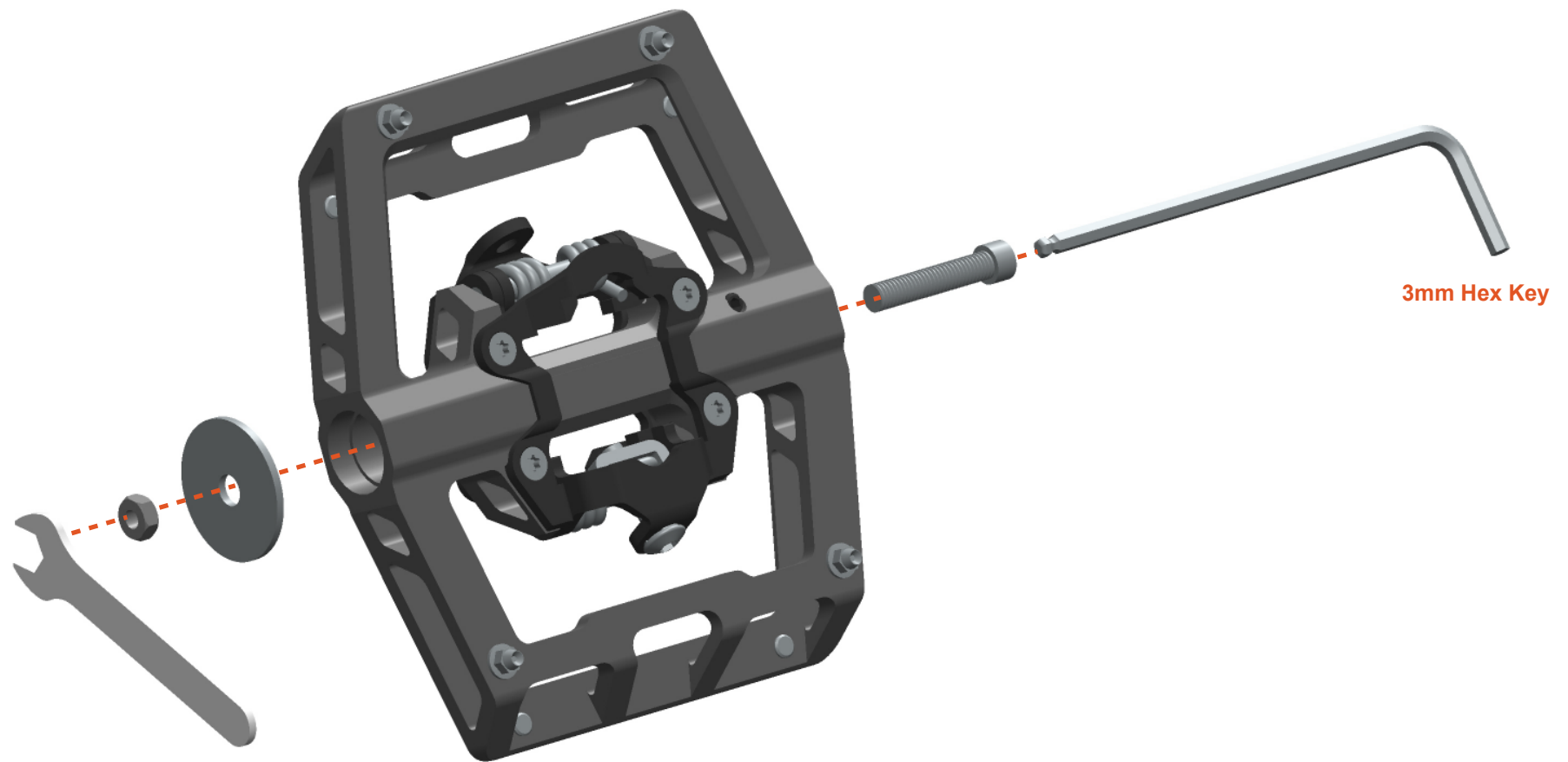




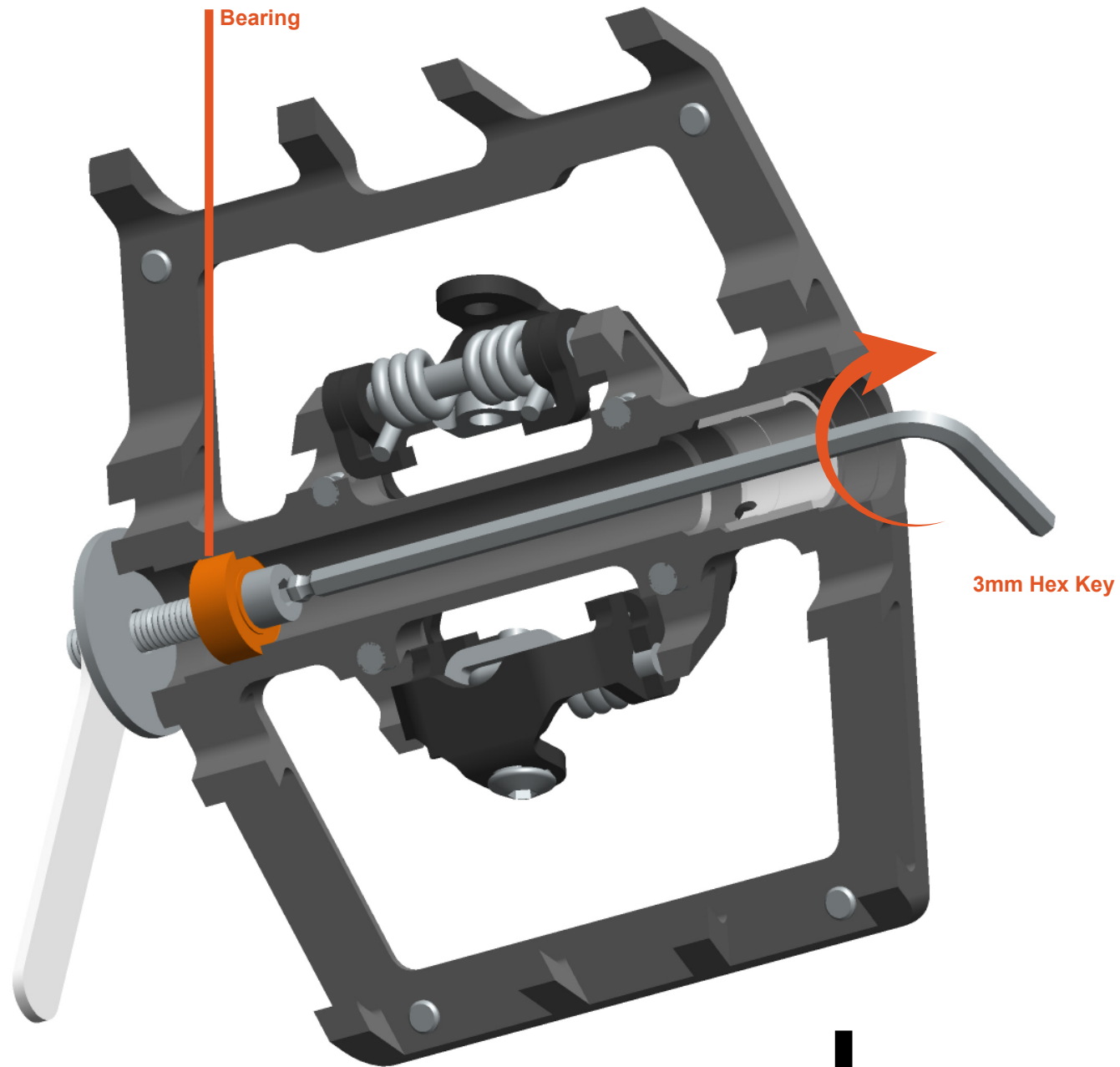
Unscrew side cap with 6mm hex key.



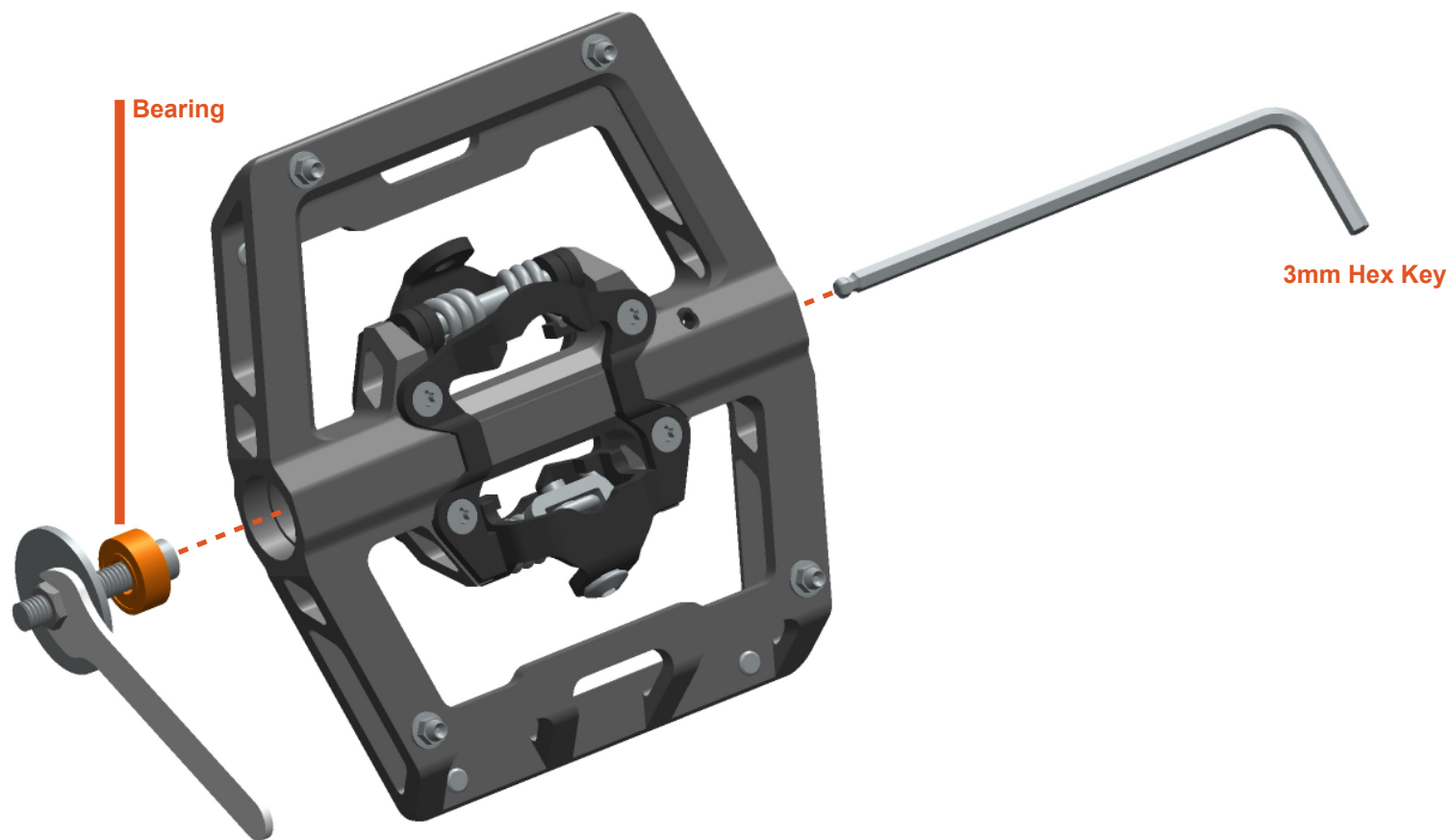
Use 8mm hex key to hold the axle in place; then unscrew the hex nut by using the 8mm socket wrench. Please note the thread direction on each side of the pedal.



In this step we will remove the bearing from inside the pedal. First, insert the M4 screw into the pedal with the 3mm hex key, and assemble the washer and nut onto the M4 screw.



Use the 7mm Open End Wrench to hold the nut in place, and tighten the M4 screw with 3mm hex key. Keep tightening the M4 screw until bearing gets pushed out.



Remove the old bearing.

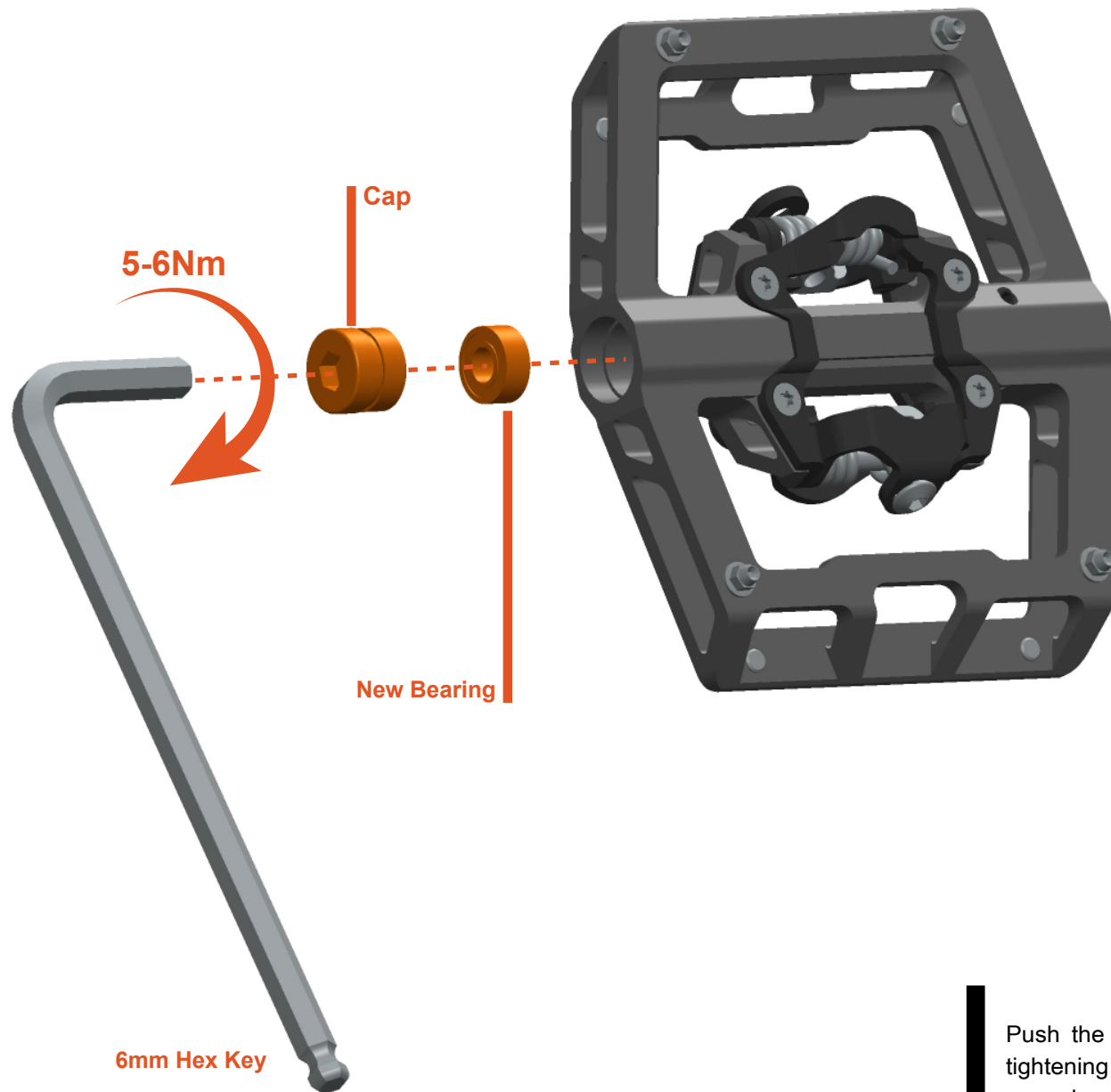


**MAMBA
PEDAL**



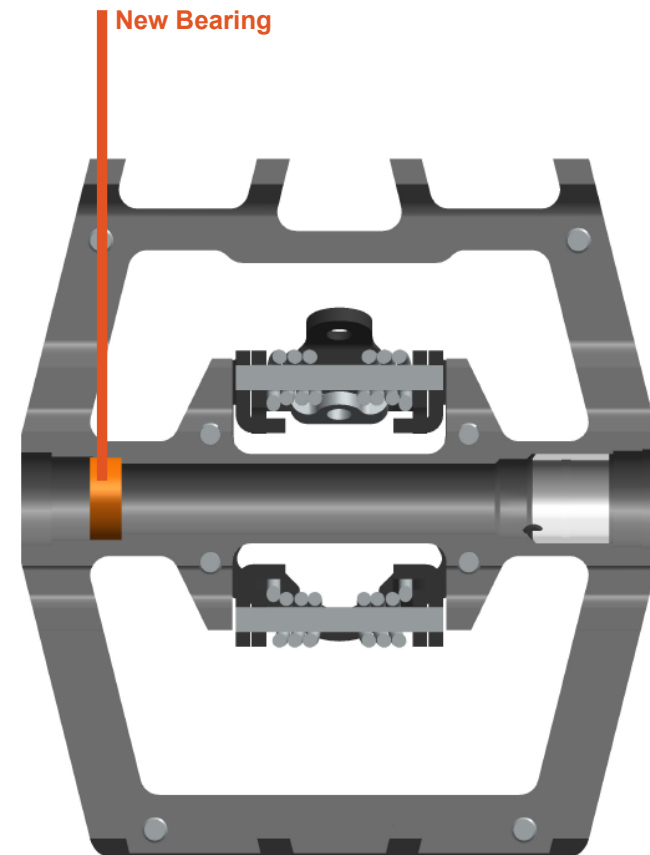
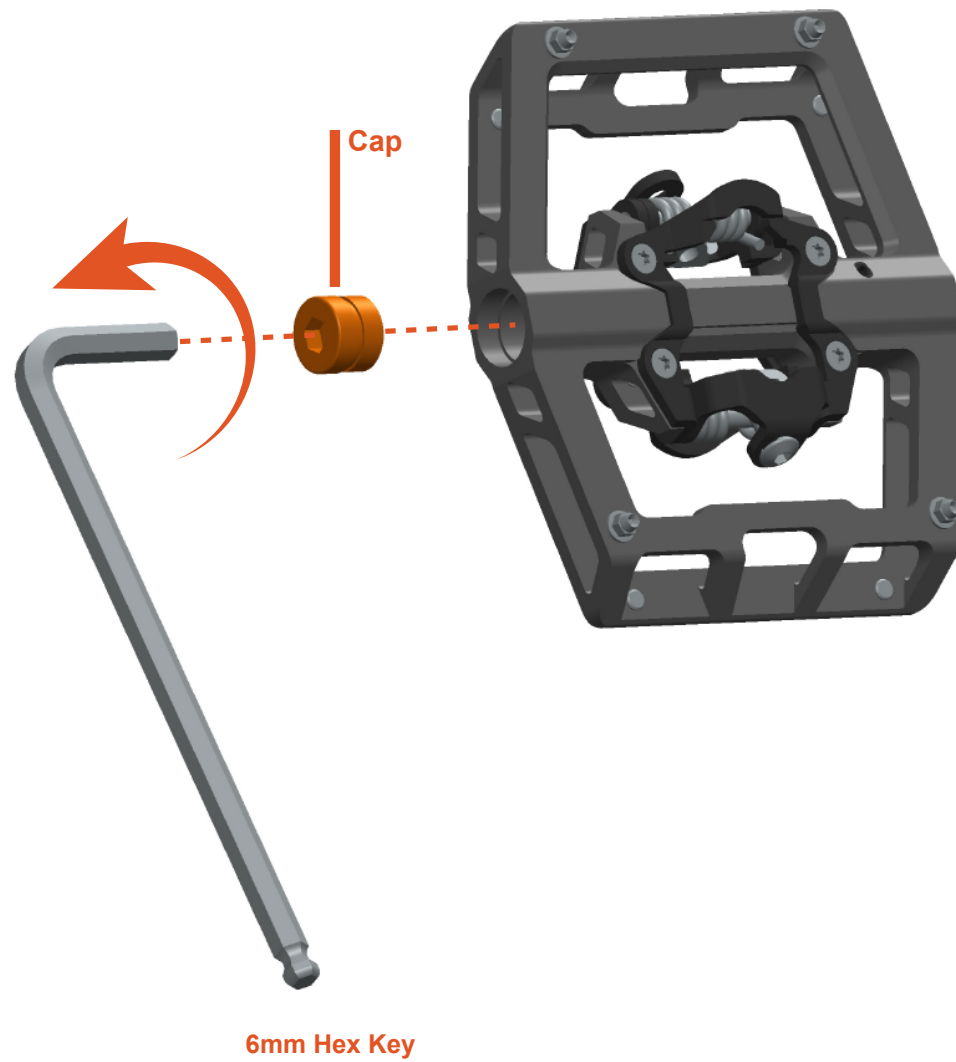
Bearing / Axle Replacement

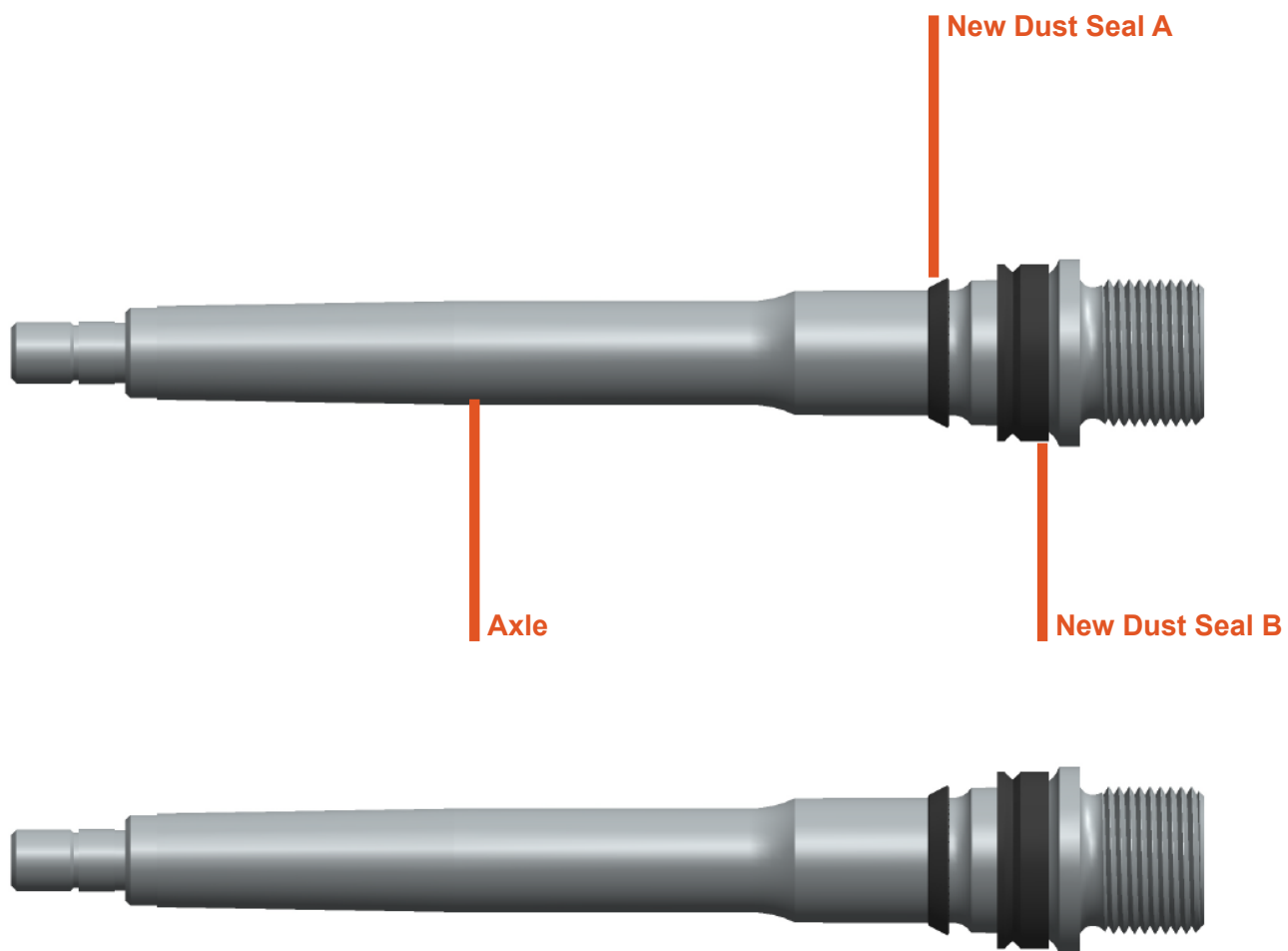
(Assembly)



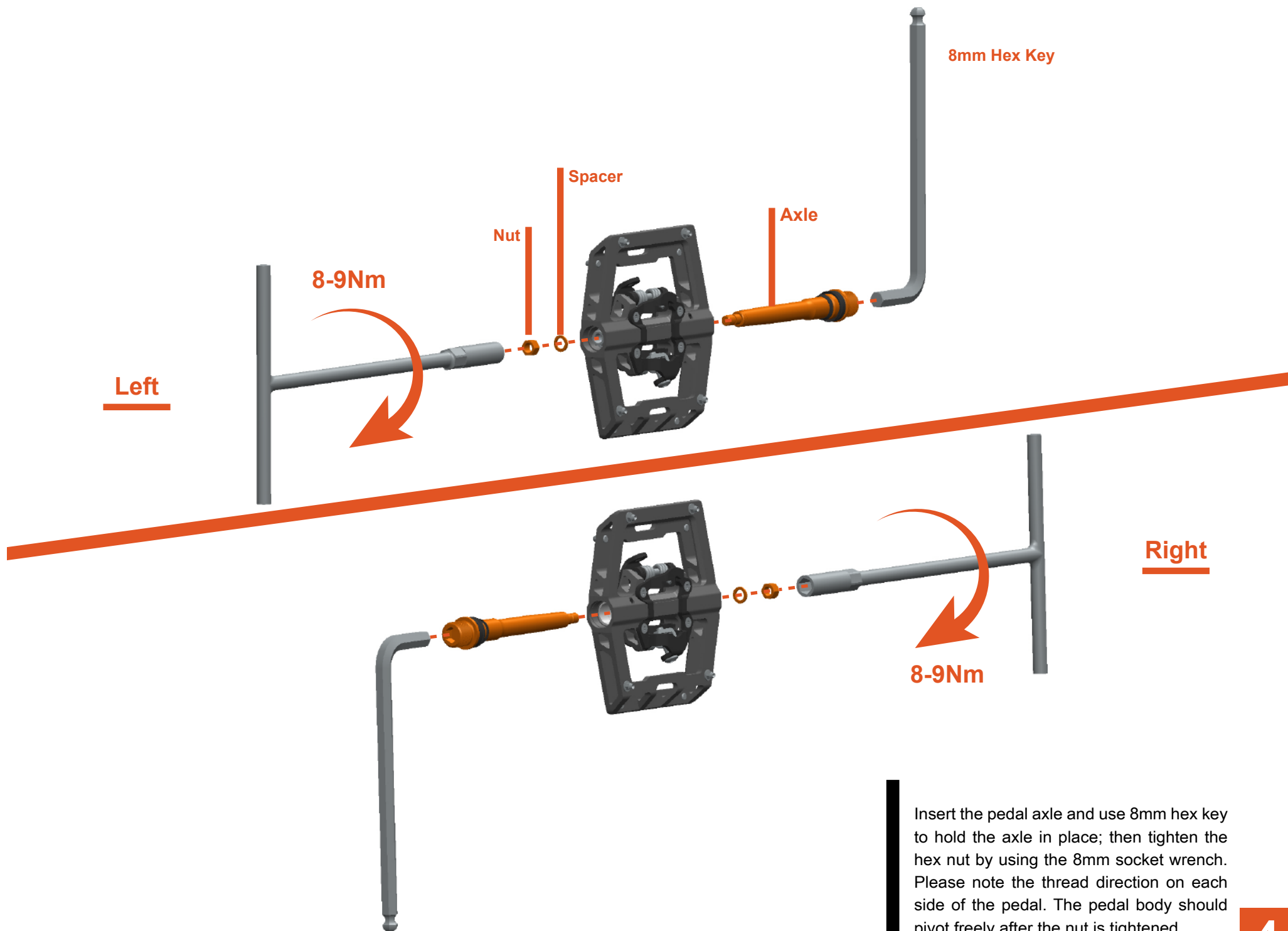
Push the new bearing into the pedal by tightening the side cap. Make sure the side cap absolutely bottoms out so that the bearing gets installed correctly.

Unscrew side cap and check if the bearing has bottomed out in the bearing seat. If not repeat the last step until it has.

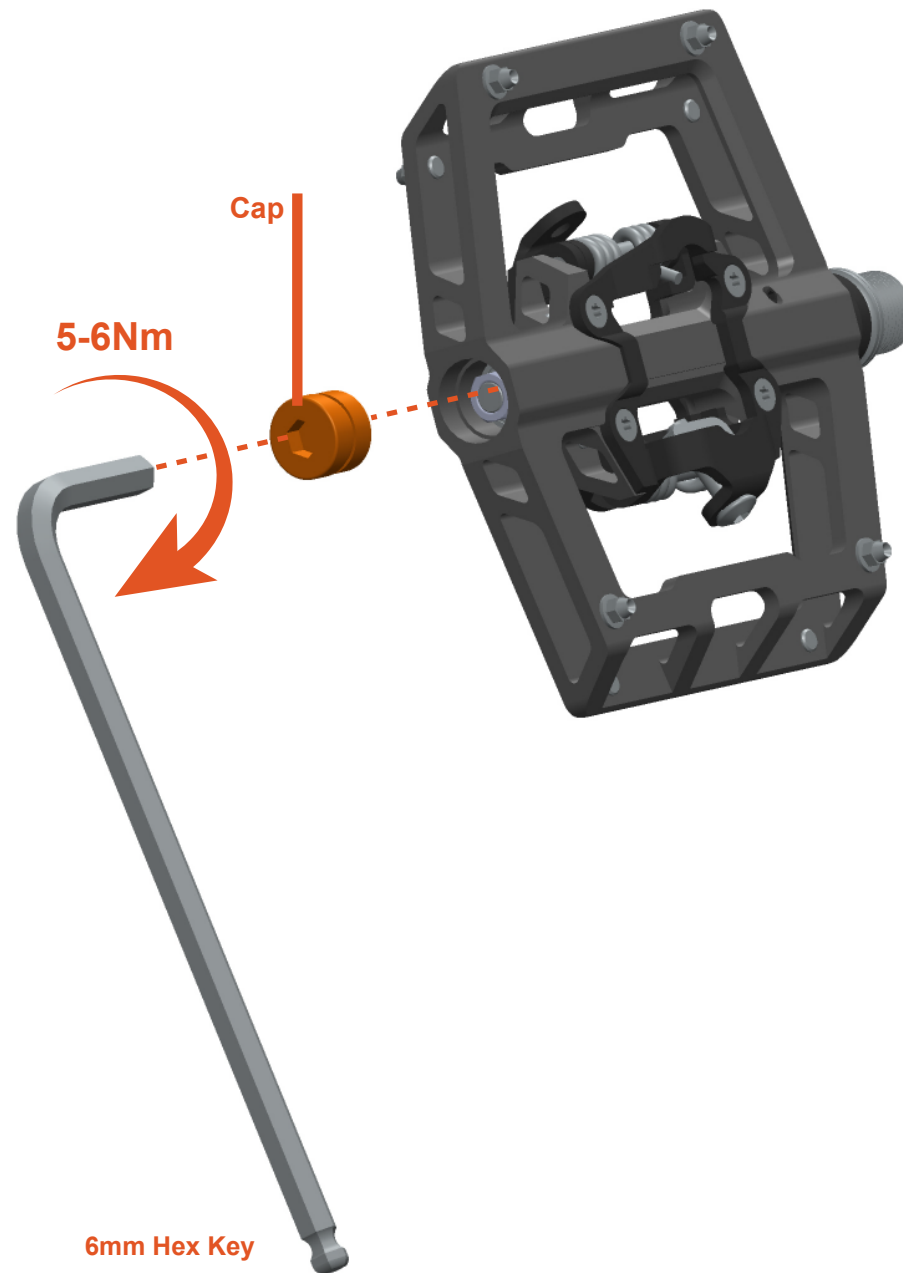




Install new dust seals onto the pedal axles and lightly grease the axle.



Insert the pedal axle and use 8mm hex key to hold the axle in place; then tighten the hex nut by using the 8mm socket wrench. Please note the thread direction on each side of the pedal. The pedal body should pivot freely after the nut is tightened.



Install side cap with 6mm hex key.